

MODEL 75L STAINLESS STEEL LOW PRESSURE FLEXIBLE COUPLING

The Model 75L is designed for low pressure MF/UF/RO systems. It is made of CF8 (304) or CF8M (316) with 304 or 316 bolts and nuts.

Sizes-Inches/DN

¾" to 12" (DN20 to DN300)

Rated Working Pressure:

350psi (25 bar) Sch40S, cut groove only

Material Specifications

Housings:

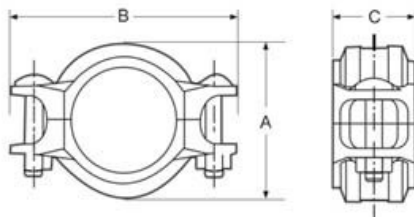
- Type 304 stainless steel to ASTM A351 CF8 or A743 Gr. CF8
- Type 316 to ASTM A743 CF8M
- Type 316L to ASTM A743 CF3M
- CE8MN to ASTM A890 Grade 2A
- Austenitic 904L (CN2MCuN) to A351
- Duplex 2205 (CD3MN) to ASTM A890 Grade 4A
- Super Duplex 2507 (CE3MN) to ASTM A890 Grade 5A
- Austenitic 254SMO (CK3MCuN) to A743

Rubber Gaskets:

The gasket seal is C-shaped, made of standard gasket EPDM (ethylene propylene diene monomer) for cold water, hot water, rare acid, oil-free air and multiple chemical product (-50 – 150°C). It is not suitable for mediums like petroleum.

Bolts & Nuts:

- Type 304 stainless steel track bolts and nuts to ASTM F-593
- Type 316 stainless steel track bolts and nuts to ASTM F-593
- Type 316 stainless steel track bolts ASTM A-193 B-8M with silicone bronze heavy duty nuts to ASTM B98 C65100



Nominal Size	Pipe OD	Rated Working Pressure	Pipe End Separation	Dimensions			
				A	B	C	Weight
mm / in	mm / in	psi / bar	mm / in	mm / in	mm / in	kgs / lbs	
20	26.900	350	0-1.6	47.000	83.000	42.000	0.269
0.75	1.059	24.13	0-0.06	1.850	3.268	1.654	0.592
25	32.000	350	0-1.6	54.000	89.000	42.000	0.306
	1.260	24.13	0-0.06	2.126	3.504	1.654	0.674
25	33.700	350	0-1.6	54.000	89.000	42.000	0.305
	1	1.327	24.13	0-0.06	2.126	3.504	1.654
32	38.000	350	0-1.6	58.500	95.000	42.000	0.351
	1.495	24.13	0-0.06	2.303	3.740	1.654	0.773
32	42.400	350	0-1.6	63.000	100.000	43.000	0.365
	1.25	1.669	24.13	0-0.06	2.480	3.937	1.693
40	48.300	350	0-1.6	69.000	105.000	44.000	0.424
	1.5	1.900	24.13	0-0.06	2.717	4.134	1.732
50	57.000	350	0-1.6	76.000	116.000	44.000	0.461
	2.244	24.13	0-0.06	2.992	4.567	1.732	1.015
50	60.300	350	0-1.6	79.000	117.000	44.000	0.467
	2	2.375	24.13	0-0.06	3.110	4.606	1.732
65	73.000	350	0-1.6	94.000	133.000	44.000	0.551
	2.5	2.875	24.13	0-0.06	3.701	5.236	1.732
65	76.100	350	0-1.6	99.000	137.000	44.000	0.586
	3.000	24.13	0-0.06	3.898	5.394	1.732	1.290
80	88.900	350	0-1.6	111.000	151.000	44.000	0.732
	3	3.500	24.13	0-0.06	4.370	5.945	1.732
100	108.000	350	0-3.2	131.000	180.000	48.000	1.136
	4.250	24.13	0-0.13	5.157	7.087	1.890	2.500
100	114.300	350	0-3.2	141.000	189.000	48.000	1.197
	4	4.500	24.13	0-0.13	5.551	7.441	1.890
125	133.000	350	0-3.2	158.000	206.000	49.000	1.331
	5.250	24.13	0-0.13	6.220	8.110	1.929	2.935
125	139.700	350	0-3.2	165.000	215.000	49.000	1.520
	5.500	24.13	0-0.13	6.535	8.465	1.929	3.344
150	159.000	300	0-3.2	189.000	239.000	50.000	1.826
	6.259	20.67	0-0.13	7.441	9.409	1.969	4.018
150	168.300	300	0-3.2	197.000	246.000	50.000	1.881
6	6.625	20.67	0-0.13	7.756	9.685	1.969	4.139
200	219.100	300	0-3.2	255.000	315.000	60.000	3.575
	8	8.625	20.67	0-0.13	10.039	12.402	2.362
250	273.000	300	0-3.2	317.000	386.000	60.000	4.795
	10	10.750	20.67	0-0.13	12.480	15.197	2.362
300	323.900	300	0-3.2	408.000	441.000	65.000	6.680
	12	12.750	20.67	0-0.13	16.063	17.362	2.559