



Tel: +44 (0) 1706 869777
E-mail: sales@desal.co.uk
Web: www.desal.co.uk

Genesys LSG Antiscalant for sea-water systems

Genesys LSG has been developed as a general purpose antiscalant for use in sea-water Reverse Osmosis and Nano-Filtration systems.

By inhibiting all scaling species, Genesys LSG allows systems to be designed and operated at high rates of recovery. Significant capital and operational cost savings can be made by reducing the amount of feed water used and concentrate to be discharged.

Application

Genesys LSG should be dosed continuously to the feed water upstream of the cartridge filters.

Typical dosage rates are 1-2 mg/L.

The optimum dosage rate can be calculated using the Genesys Membrane Master software.

Genesys LSG can be diluted and is fully miscible with water in all proportions.

Health and Safety

Genesys LSG is an aqueous solution of a neutralised phosphonic acid and is compatible with carbon steel and all commonly used materials of construction.

A material safety data sheet is available on request.

Classification

CHIP: Not Classified | UN: Non Hazardous

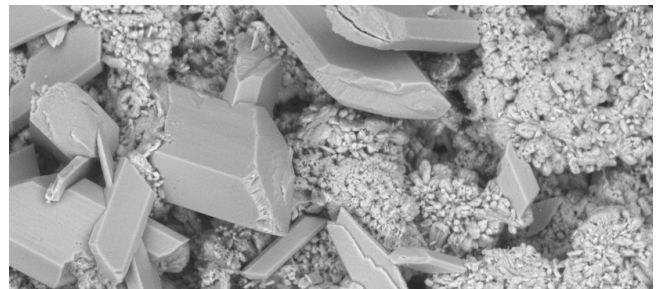
Packaging

Available in 25 kg kegs, 230 kg drums and 1,000 kg IBCs.

Shelf life is 2 years under normal conditions of storage.

Typical properties

Appearance: pale green coloured liquid
pH as supplied: 9.7 – 10.3
Specific gravity: 1.08 – 1.11
Freezing point: < -2°C



Inhibits Scale Formation



Prevents Iron Fouling

- ✓ Suitable for Reverse Osmosis (RO) and Nano-Filtration (NF) membranes
- ✓ Particularly effective in high pressure systems working at 50-60% recovery
- ✓ Compatible with all polyamide membranes
- ✓ Highly cost effective alternative to SHMP and sulphuric acid
- ✓ Inhibits common scales
 - Calcium carbonate/sulphate
 - Calcium phosphate
 - Barium/Strontium sulphate
 - Silica
 - Iron/Manganese

The information provided in this data sheet is believed to be true and accurate. Genesys International Ltd. accepts no product liability as the use of its products are outside the company's control.